

pompom
quarterly



HOW TO KNIT FROM A CHART

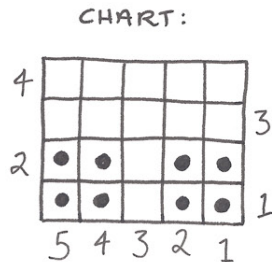
A SUMMER SWEATER KNIT ALONG TUTORIAL

VERYSHANNON.COM

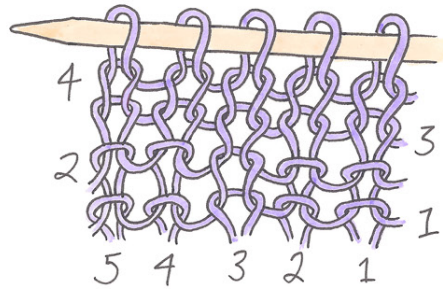
How To READ A CHART

- the basics!

1.

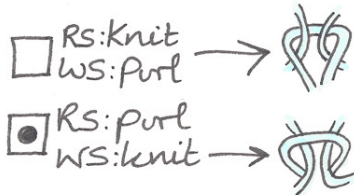


(shows stitches from RS)



Knitting charts are a graphic representation of knitting. In place of written instructions a grid is used where each box represents a stitch. The symbol in the box tells you what stitch should be worked.

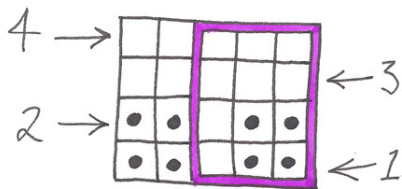
KEY:



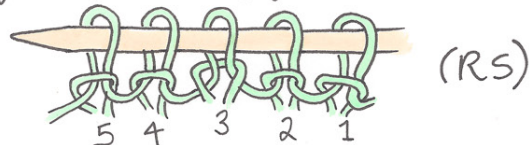
Use the key to check what each symbol means before you start.

WORKING FLAT

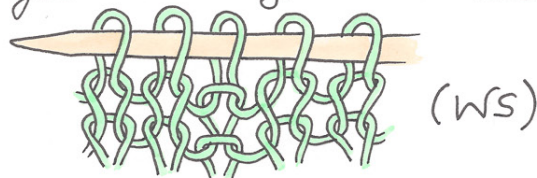
To work flat read RS rows right to left, and WS rows left to right - of course you still knit right to left on WS rows, but on the opposite side - which is why the chart is read this way.



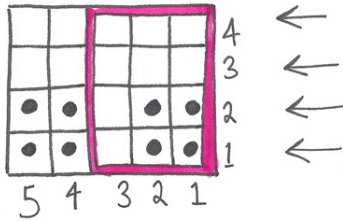
After knitting first row



After knitting second row

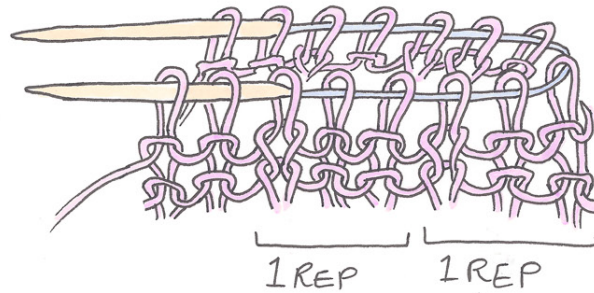


WORKING IN THE ROUND



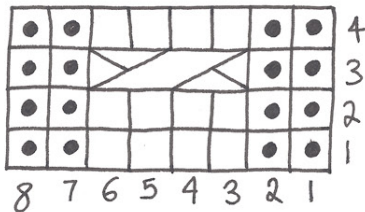
□ indicates repeat

To work in the round all rows are read from right to left - because you are only working on the RS



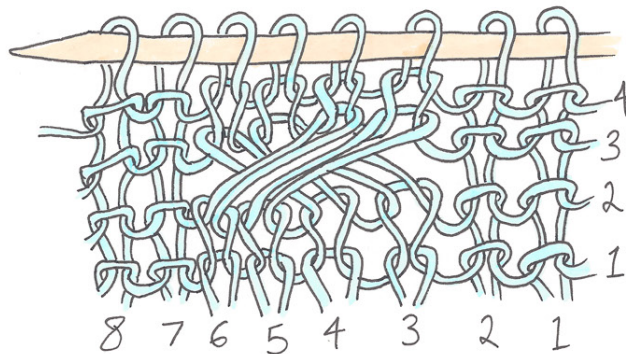
Repeats work the same way as brackets do in written knitting instructions

CABLES



☒ C4B (cable 4 back):

Slip next 2 sts to cable needle & hold at back, k2 from left hand needle, then k2 from cable needle



Cables are worked over more than one stitch, so they take up more than one box - as many boxes as there are stitches involved in working them. e.g. C4B involves 4 stitches so the symbol is 4 stitches wide.